

The COMET has mobility programs that can take you anywhere you want to go, within the Columbia Urbanized Area, as long as you start your ride outside The COMET service area, and you register for these programs as a senior (age 65 or older) or have a disability. Details on how mobility can work for you is below:

Pick Up Program (PUP)

How does it work?

The COMET Pick Up Program gives you a monthly allowance of \$100 to pay for taxi, Lyft or Uber rides.

Is it for me?

This program is for people with disabilities and seniors 65 or older and meet the following:

1. Live outside The COMET service area.
2. Live inside Richland or Lexington County.
3. Live inside the Columbia Urbanized Area.

This area is described on the back of this card.



How do I start?

After you complete the training and application, you are ready to start. The training can be done online, over the phone, and in person (when COVID-19 risk goes down).

Volunteer Transportation Reimbursement Program (V-TRIP)

How does it work?

V-TRIP lets riders get money back to pay the people in their life who drive them. If you have a friend from church, work, school, or the neighborhood, who gives you a ride this program may help cover gas.

Your driver **cannot** be a family member. The reimbursement rate is 150 miles a month at \$88 per month.

Is it for me?

This program is for people with disabilities and seniors 65 or older and meet the following:

1. Live outside The COMET service area.
2. Live inside Richland or Lexington County.
3. Live inside the Columbia Urbanized Area.

This area is described on the back of this card.



How do I start?

After you complete the training and application, you are ready to start. The training can be done online, over the phone, and in person (when COVID-19 risk goes down).

V-TRIP and PUP Service Area Map

The dotted area is The COMET Service Area.

Trips can not originate and end in this area.

The shaded areas are the Columbia Urbanized Area. Trips must start or end in this zone.

Area inside black outlines – no service available.

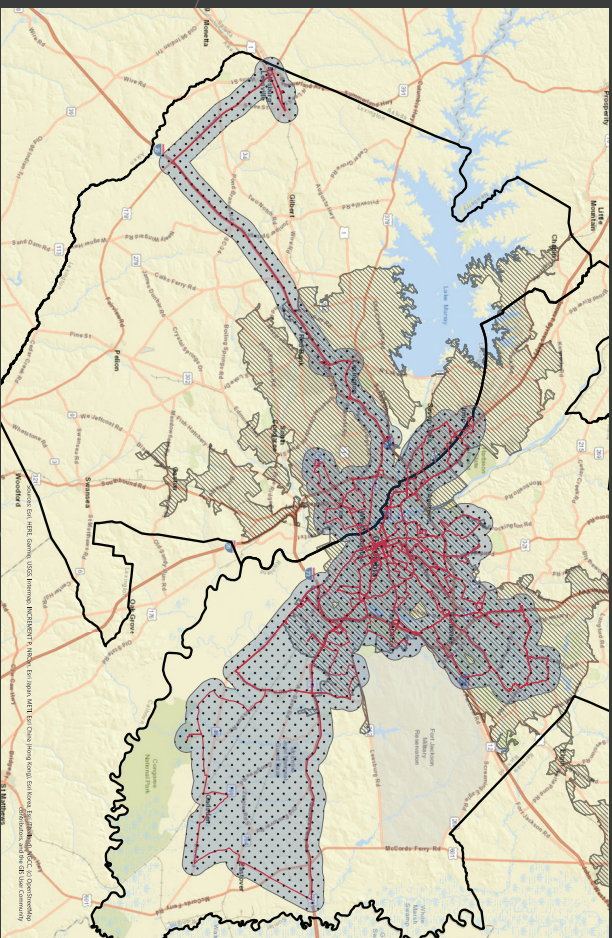


FOR MORE INFORMATION

<http://catchthecometsc.gov/whats-new/mobilitythatworksforyou/>

or call **803-834-2382**

THE COMET
able
SOUTH CAROLINA



If you have any questions contact **Able South Carolina** at
803-779-5121 or email transportation@able-sc.org